

# alfasi hire

alfasihire.com.au





# alfasi hire

**12**

Crawler Cranes

**19**

Mini Crawler Cranes

**20**

Rough Terrain Cranes

**21**

Pick & Carry Cranes

**24**

The Alfasi Hire Difference

**26**

Electric Scissor lifts

**27**

Narrow Electric Scissor Lifts

**28**

Large Electric Scissor Lifts

**29**

Speed Levels

**30**

Rough Terrain Scissor Lifts

**32**

Track Scissor Lifts

**33**

Electric Articulating Boom Lifts

**35**

Rough Terrain Articulating Boom Lifts

**37**

Rough Terrain Telescopic Boom Lifts

**38**

Large Boom Lifts

**39**

Hybrid Boom Lifts

**40**

Spider Lifts

**44**

Vertical Lifts

**45**

Light Towers

**46**

Telehandlers

**49**

Forklifts

**51**

Buggy Forklifts

**52**

Towables

**53**

General Hire

**54**

Service Vehicles & Trucks



BUREAU VERITAS  
Certification



Certification

Awarded to

ALFASI EQUIPMENT HIRE PTY LTD

110 FRANKSTON GARDENS DRIVE, CARRUM DOWNS, VIC, 3201  
86-96 DEPOT STREET, BANYO, QLD, 4014  
21-23 WURROOK CIRCUIT, CARINGBAH, NSW, 2229  
AUSTRALIA

Bureau Veritas certify that the Management System of the above organisation has been audited and found to be in accordance with the requirements of the management system standards indicated below

STANDARD

ISO 9001:2015

SCOPE OF SUPPLY

AUSTRALIA WIDE DRY HIRE OF CRANES, ACCESS, MATERIALS HANDLING, LIGHTING AND OTHER PLANT AND EQUIPMENT AS WELL AS ADDITIONAL SERVICES SUCH AS PLANT MAINTENANCE, INSPECTION, TRANSPORTATION, TRAINING AND TECHNICAL SUPPORT

Original Approval Date: 18 July 2017

First Original QMS Approval Date: 17 June 2014

Subject to the continued satisfactory operation of the organisation's Management System, this certificate is valid until: 16 June 2020

To check the validity of this certificate please call tel. 1800 855 190

Further clarification regarding the scope of this certificate and the applicability of the Management System requirements may be obtained by consulting the organisation.

Certificate Number: AU003141-1



Date: 10 September 2018

Andrew Mortimore  
Vice President – I&F Pacific Region



Managing office: Bureau Veritas Pty Ltd, 3/435 Williamstown Road, Port Melbourne, Victoria, 3207

Issuing office: Bureau Veritas Pty Ltd, 3/435 Williamstown Road, Port Melbourne, Victoria, 3207



BUREAU VERITAS  
Certification



Certification

Awarded to

ALFASI EQUIPMENT HIRE PTY LTD

110 FRANKSTON GARDENS DRIVE, CARRUM DOWNS, VIC, 3201  
86-96 DEPOT STREET, BANYO, QLD, 4014  
21-23 WURROOK CIRCUIT, CARINGBAH, NSW, 2229  
AUSTRALIA

Bureau Veritas certify that the Management System of the above organisation has been audited and found to be in accordance with the requirements of the management system standards indicated below

STANDARD

AS/NZS 4801:2001

SCOPE OF SUPPLY

AUSTRALIA WIDE DRY HIRE OF CRANES, ACCESS, MATERIALS HANDLING, LIGHTING AND OTHER PLANT AND EQUIPMENT AS WELL AS ADDITIONAL SERVICES SUCH AS PLANT MAINTENANCE, INSPECTION, TRANSPORTATION, TRAINING AND TECHNICAL SUPPORT

Original Approval Date: 18 July 2017

First Original OHS Approval Date: 17 June 2014

Subject to the continued satisfactory operation of the organisation's Management System, this certificate is valid until: 16 June 2020

To check the validity of this certificate please call tel. 1800 855 190

Further clarification regarding the scope of this certificate and the applicability of the Management System requirements may be obtained by consulting the organisation.

Certificate Number: AU003145-1



Date: 10 September 2018

Andrew Mortimore  
Vice President – I&F Pacific Region



Managing office: Bureau Veritas Pty Ltd, 3/435 Williamstown Road, Port Melbourne, Victoria, 3207

Issuing office: Bureau Veritas Pty Ltd, 3/435 Williamstown Road, Port Melbourne, Victoria, 3207



Alfasi Equipment Hire is one of the only hire companies in Australia to have both the ISO 9001 Quality and 4801 OH&S Management Accreditations.

04

05





# **alfasi** hire rewards program.

Spend with us and win  
**frequent hire points.**  
Redeem points and get  
free hire, free transport  
or win prizes.



# alfasi hire

*Our vision is to be the leading provider of equipment solutions Australia wide*

We are a specialist **dry hire crane** company that provides a truly national service. With one of the newest crane fleets on the market, we are constantly investing in cranes from the leading brands such as Liebherr, Terex, Maeda, Tadano and Grove-Manitowoc. We are confident in our abilities to provide dry hire lifting solutions for any project, large or small.

Alfasi Equipment Hire benefit from being part of the Alfasi Group and our exposure to numerous high profile construction and infrastructure projects where our cranes are often used alongside our Elevated Work Platforms and Materials Handling equipment.

Our ISO 9001 Quality Assurance and AS/NZS 4001 Environmental and Occupational Health & Safety accreditations, gives you peace of mind that the equipment you receive has been quality and safety checked, and meets even the most strict site requirements.

We have been operating cranes for over forty years, and over that time we have introduced new hire equipment to supplement our crane hire. Since 2003, Alfasi Equipment Hire also offer access equipment, telehandlers and a range of other general equipment.

Our fleet of access and material handling equipment now exceeds **2,000** machines and growing. Our cranes range from the small **5t** capacity all the way through to our **300t** pin jib crawler cranes.

Our ongoing commitment to our clients is to continue to add additional cranes to our fleet and work with you to source any crane you require for any job.

That's the Alfasi Hire Difference!

## cranes







### LIEBHERR LR1250 250t PIN JIB CRAWLER CRANE

#### Capacity & Reach:

- Main boom 62m
- Aux sheave 24t capacity
- Line pull 12t
- Self erection capability

#### Additional Features:

- Fast erection times
- Litronic Advanced diagnostic system
- Lidat GPRS system
- Online load calculations & planning including track loads
- Compliant to highest safety standards of EN13000 including integrated data recorder
- Engine complies with NRMM exhaust certification EPA/CARB Tier 4f and 97/68 EC Stage IV



### LIEBHERR LR1300 300t PIN JIB CRAWLER CRANE

#### Capacity & Reach:

- Main boom 98m
- Luffing jib 113m
- Line pull 15t
- Auxiliary jib 36t capacity
- Maximum combination of 172m boom

#### Additional Features:

- 172m max boom combination (longest in class)
- 98m max main boom (longest in class)
- Self erecting system
- Wind farm erection system
- Fast erection times
- Derrick system or suspended counterweight for enhanced lifting capability
- Modular systems (interchangeable boom and components)
- Euromot III engine environmentally friendly (highest emission standards)
- Litronic Advanced diagnostic system
- Economical transport (fly sections transported inside main boom)
- Lidat GPRS system
- Superlift / derrick capability





### LIEBHERR LR1160 160t PIN JIB CRAWLER CRANE

#### Capacity & Reach:

- Main boom 69.8m
- Fixed jib 32m
- Luffing jib 49.1m
- Line pull 12t
- Auxiliary jib 24t capacity (enabling 2 rope falls on auxiliary hook)
- Maximum combination of 109.9m boom

#### Transport and Rigging:

- Self erection system
- Fast erection time
- Economical transport (jib sections within main boom)
- Modular and inter-changeable boom components

#### Additional Features:

- 1000mm wide flat track shoes
- Proportional operating controls
- Graphical easy to understand interface for operator
- Cabin tilting system
- 270kW Engine environmentally friendly complying with EC 97/68 stage III standards
- Online load calculations & planning including track loads
- Compliant to highest safety standards of EN13000 including integrated data recorder



### HITACHI SUMITOMO SCX1500-2 150t PIN JIB CRAWLER CRANE

- 150t Capacity
- 75m Main boom
- 28m of Fly jib
- 128t Operating weight
- Rope line speed of 110m/minute
- Advanced clutchless multiple wet disk brake for continuous heavy duty operation
- Fitted with secondary brake to comply with Workcover Victoria requirements for man box operations
- Negative brake system to reduce operator fatigue and enhance safety
- Enhanced operator comfort with such features as large cab sliding door, slidable control station and seat, specially tailored EPC system and armchair control station with drum rotation sensors
- Easy to assemble and disassemble thanks to counterweight with horizontally split design and 'hook on design' with hydraulic removal jointpins for the crawler side frames





### LIEBHERR LR1130 130t PIN JIB CRAWLER CRANE

#### Capacity & Reach:

- 62m Main boom
- Fixed jib 32m
- Luffing jib 49.1m
- Line pull 12t
- Auxiliary jib 24t Capacity (enabling 2 rope falls on auxiliary hook)
- Maximum combination of 102.1m boom

#### Transport and Rigging:

- Self erection system
- Fast erection time
- Economical transport (jib sections within main boom)
- Modular and inter-changeable boom components

#### Additional Features:

- 1200mm Wide flat track shoes
- Proportional operating controls
- Graphical easy to understand interface for operator
- Cabin tilting system
- 270kW Engine environmentally friendly complying with EC 97/68 stage III standards
- Online load calculations & planning including track loads



### LIEBHERR LR1100 100t PIN JIB CRAWLER CRANE

#### Capacity & Reach:

- Main boom 65m
- Fixed jib 32m
- Luffing jib 49.1m
- Line pull 12t
- Auxiliary jib 24t capacity (enabling 2 rope falls on auxiliary hook)
- Maximum combination of 90.1m boom

#### Transport and Rigging:

- Self erection system
- Fast erection time
- Extendable tracks
- Transportable with tracks fitted at 3.5m wide
- Economical transport (jib sections within main boom)
- Modular and inter-changeable boom components

#### Additional Features:

- 900mm Wide flat track shoes
- Proportional operating controls
- Graphical easy to understand interface for operator
- Cabin tilting system
- 270kW Engine environmentally friendly complying with EC 97/68 stage III standards
- Online load calculations & planning including track loads







### MANITOWOC 8500 80t PIN JIB CRAWLER CRANE

#### Capacity & Reach:

- Main boom 61m
- Fixed jib 18.3m
- Line pull 7.7t
- Rooster jib
- Maximum combination of 73.2m boom

#### Transport and Rigging:

- Removable counter-weight componentry
- Efficient load plan capability for transport
- Extendable tracks
- Transportable with tracks fitted at 3.5m wide

#### Additional Features:

- 914mm Wide track shoes
- Proportional operating controls
- Graphical easy to understand interface for operator
- 159kW Engine



### MAEDA LC785M-8B 5t MINI CRAWLER CRANE

- 15.63m Main boom
- Fold out jib 3.0m/4.7m
- 2,350mm wide
- Pick and carry 2,000kg
- Weight 9,700kg
- Minimal tail swing
- Levelling blade to clear your own work area

### MAEDA LC1385M-8B 6t MINI CRAWLER CRANE

- 16.25m Main boom
- 5.16m Fixed fly jib
- 2,490mm wide
- Pick and carry 2,000kg
- Weight 15,640kg
- 22m Maximum combination
- Levelling blade to clear your own work area





### TADANO GR800EX 80t ROUGH TERRAIN CRANE

- 80t Capacity
- 5 Section main boom 12m to 47.0m
- Extension speed 35m in 160s
- 17.7m Jib
- Gross vehicle mass 51.4t
- Maximum travelling speed 39km/h
- Gradeability 30%
- Single line speed 149m/minute



### TEREX FRANNA MAC 25-4 25t FRANNA CRANE

- 25t Capacity
- Extra Superlift C/W for greater capacities
- Road registered
- 18.4m Full power boom
- 15t Spreader bar
- Mine spec including handrails to rear body
- Spare wheel
- Terex LMI dynamic rated capacity system for increased capacities
- New rear cabin door
- GPS & reverse camera system
- Waeco 30L fridge



### TEREX FRANNA AT-20-III 20t FRANNA CRANE

- 20t Capacity
- Pick and carry crane
- Road registered
- 17.9m Main boom
- 3.0m Fixed fly
- 15t Spreader bar

#### Additional Features:

- Lincoln central greasing
- 3m Fly jib
- Handrail to rear body
- Filler cap lock
- Fire extinguisher
- Spare wheel
- Tool box bins



# alfasi hire

We believe what sets us apart from other hire companies, is our variety of choice of specialist **Elevated Work Platform, Materials Handling and Crane Hire** equipment and the added specifications that we include on all of our best in class assets. We provide this quality service to our clients **24 Hours 7 Days a Week**. With branches around the east coast of Australia, and the resources to work in any location, we are your hire company of first choice for all your at height project requirements.

We are one of only a couple of hire companies that has achieved the **ISO9001 Quality Assurance and AS/NZ4801 Occupational Health and Safety Management Systems** qualifications. We are invested in assuring that the correct procedures are followed each and every hire to, and we understand the specific requirements that apply to today's work sites.

With over **2,000** assets in our fleet of equipment, including the widest range of Access Equipment, Telehandlers, Forklifts and Cranes. Alfasi Hire has one of the most comprehensive and modern fleets in Australia, and supported by our highly trained and specialised office staff and in field service technicians in Melbourne, Brisbane and Sydney, we are confident we can deliver on your equipment requirements.

We are dedicated to a continuous improvement methodology, and aim to remain at the forefront of the hire industry. To do this we are committed to reinvesting in our fleet, to ensure we have the latest in machine technology, and working closely with our manufacturers and our clients to include additional specifications and safety systems, to ensure we remain the hire company of first choice. Some additional specifications include; **the latest mine, rail and tunnelling specifications including MDG15 and BMA across our fleet, and Secondary Safety Guarding** on all booms.

We are committed to growing our business on one of our core principles of fostering long term quality relationships with our clients, by listening and developing a deeper understanding of their business and their current projects. We work more closely with our clients on providing them the most modern lifting solutions.

Make Alfasi Hire your first choice for your Access, Materials Handling and Crane Dry Hire Equipment on your next project, and see the Alfasi Hire Difference first hand!

# elevated work platforms, forklifts & telehandlers





# the alfasi hire difference

1 Disconnect on board generator and removal of belt (optional)

2 Skyguard Crash Protection

3 Work Cover machine design registration

4 12 Months service history

5 Mesh around lower half of basket

6 All controls have legible decals

7 Emergency stop button (one at ground and one on basket)

8 4 Pole lockable isolator with ID decal (red)

9 All main battery cables in split tubing

10 Extreme hose separation hydraulic to electrical (optional)

11 Rubber boot covering all exposed electrical terminals

12 Separation of electrical harnesses using P-clamps (optional)

13 Isolate ground and basket power outlets with isolation padlock (optional)

14 Jump start point (350 Anderson connector)

15 Starter motor lockable isolator with ID decal (yellow)

16 Steel braided fuel hose

17 Turbo sock / cover

18 Pressure relieving radiator cap (mine safe red lever)

19 Guarding on all rotating parts

20 Separation of fuel hoses using P-clamps (optional)

21 Hydraulic accumulator testing (optional)

22 80 ABE minimum 4.5kg fire extinguisher with ID decal

23 2 x Call up ID (45mm thick and 200mm high lettering)



we've  
gone  
digital



- Hire machines using the Alfasi Hire App
- Tablets used by our mechanics to manage all services
- Text message to keep customers updated on hired machines
- Machines equipped with telematics providing live GPS services and diagnostic data

Burst protection on hoses at fly boom for operator 24

High visibility tape on basket, boom and machine 25

Separation of hydraulic hoses using P-clips (optional) 26

PPE decals (entire machine) 27

Spiral wrapped lower exposed hydraulic hoses 28

Wheel nut tension indicator 29

Wheel chocks 30





**JLG 1230ES**  
3.66m – 12'

- Transport in standard lifts
- Non marking tyres
- High angle steering provides excellent manoeuvrability
- Access through standard doorways
- Weight 790kg
- Platform capacity 227kg



**JLG 1930ES**  
5.72m – 19'

- Slip resistant deck
- Non marking tyres
- High angle steering provides excellent manoeuvrability
- Access through standard doorways
- Weight 1,570kg
- Platform capacity 120/230kg
- Outdoor rated



**GENIE GS-1932**  
5.79m – 19'

- Slip resistant deck
- Access through standard doorways
- Non marking tyres
- Weight 1,500kg
- Platform capacity 227kg



**JLG 2646ES**  
7.92m – 26'

- Non marking tyres
- Slip resistance surface
- Larger platform and satisfies heavier lifting requirements
- Weight 2,600kg
- Platform capacity 230/450kg
- Outdoor rated



**JLG 3246ES**  
9.68m – 32'

- Slip resistant deck
- Non marking tyres
- Extra elevation for indoor applications
- Weight 2,770kg
- Platform capacity 320/450kg
- Outdoor rated



**JLG 2630ES/  
2632ES**  
7.74m – 26'  
(NARROW)

- Non marking tyres
- Slip resistant deck
- Fits through narrow aisles and doorways
- Weight 2,160kg
- Maximum lifting capacity 230kg



**GENIE GS-3232**  
9.75m – 32'  
(NARROW)

- Non marking tyres
- Slip resistant deck
- Fits through narrow aisles
- Weight 2,352kg
- Maximum lifting capacity 227kg
- Inboard stabilisers



**GENIE GS-2632**  
7.92m – 26'  
(NARROW)

- Non marking tyres
- Slip resistant deck
- Fits through narrow doorways
- Weight 1,956kg
- Maximum lifting capacity 227kg



**HAULOTTE  
OPTIMUM 8**  
5.76m – 19'

- Slip resistant deck
- Drivable at full height
- Non marking tyres
- Access through standard doorways
- Weight 1,420kg
- Platform capacity 230kg



**GENIE GS-2046**  
6.10m – 20'

- Slip resistant deck
- Larger working platform
- Non marking tyres
- Weight 1,974kg
- Platform capacity 544kg



**GENIE GS-2646**  
7.92m – 26'

- Non marking tyres
- Slip resistance surface
- Larger platform and satisfies heavier lifting requirements
- Weight 2,447kg
- Platform capacity 113kg/450kg
- Outdoor rated



**GENIE GS-3246**  
9.68m – 32'

- Non marking tyres
- Roll out deck
- Platform capacity 318kg
- Weight 2,812kg
- Outdoor rated





### JLG M3369LE 10.06m – 33'

- All-Wheel Drive, superior performance on slab or rough terrain
- Drive capability at maximum height
- Outriggers
- Onboard generator for recharging batteries
- Zero emissions
- Weight 4,430kg
- Platform capacity 450kg



### JLG M4069LE 12.19m – 40'

- All-Wheel Drive, superior performance on slab or rough terrain
- Drive capability at maximum height
- Onboard generator for recharging batteries
- Outriggers
- Zero emissions
- Weight 5,520kg
- Platform capacity 360kg

### HOLLAND HL-220 E12 19.70m – 65'

- Working Height 21.70M/72'
- Platform Capacity 500Kg (2 people + 340Kg)
- Weight 9,120Kg
- Suitable for indoor and outdoor jobs
- Driveable with loads while fully extended



### GENIE GS2668E 7.9m – 26'

- Large overall deck area
- Platform width of 1.7m
- 567kg Platform capacity
- Non marking tyres
- 1.5m roll out deck
- Long life batteries



### HAULOTTE COMPACT 14 11.8m – 40'

- Driveable at full height
- Extended platform
- 1.2m Wide
- Weight 3,170kg
- Load capacity 350kg



### MEC 3084RT SPEED LEVEL

- Platform height 9m
- Lift capacity 680kg
- Gradeability 45%
- Able to elevate on up to a 14° slope
- Weight 3,400kg
- Diesel rough terrain
- Fast platform levelling on slopes
- Non marking tyres
- Quad-Trax 4WD power
- Non-skid metal deck construction
- Drives whilst elevated on fixed inclines up to 10°
- Perfect for tunnel or ramp work
- Platform levels on uneven surfaces without outriggers, keeping 4 wheels in contact with the ground for extra stability

### MEC 3084 HYBRID SPEED LEVEL

- Platform height 9m
- Lift capacity 680kg
- Gradeability 45%
- Able to elevate on up to a 14° slope
- Electric rough terrain
- Fast platform levelling on slopes
- Non marking tyres
- Quad-Trax 4WD power
- Drives whilst elevated on fixed inclines up to 10°
- Perfect for tunnel or ramp work
- Platform levels on uneven surfaces without outriggers, keeping 4 wheels in contact with the ground for extra stability







### GENIE GS-2668 RT 7.9m – 26'

- 4WD Superior rough terrain performance
- Automatic levelling outriggers
- Weight 3,486kg
- Platform capacity 567kg



### HAULOTTE COMPACT 10 DX – 8.15m – 26'

- 4WD Superior rough terrain performance
- Automatic levelling outriggers
- Weight 3,530kg
- Platform capacity 565kg



### GENIE GS-3268 RT 9.75m – 32'

- 4WD Superior rough terrain performance
- Automatic levelling outriggers
- Weight 4,153kg
- Platform capacity 454kg



### HAULOTTE COMPACT 12 DX - 10.15m – 32'

- 4WD Superior rough terrain performance
- Automatic levelling outriggers
- Weight 4,080kg
- Platform capacity 450kg



### GENIE GS-4069 RT 12.19m – 40'

- 4WD Superior rough terrain performance
- Automatic levelling outriggers
- Weight 5,241kg
- Platform capacity 363kg



### GENIE GS-4390 RT 13.11m – 43'

- 4WD Superior rough terrain performance
- Fold down handrails
- Mega deck platform - 6.57m long fully extended (twin extension)
- Weight 7,692kg
- Platform capacity 680kg



### JLG 43' RT SCISSOR 13.11m – 43'

- Constant traction 4WD for 45% gradability
- Extension deck and both ends of platform
- Working Height 14.94m / 49ft
- Weight 7,150Kg
- Platform capacity 680kgs



### GENIE GS-5390 RT 16.15m – 53'

- 4WD Superior rough terrain performance
- Mega deck platform - 6.57m long fully extended (twin extension)
- Access through standard doorways
- Weight 8,274kg
- Platform capacity 680kg



### MEC 6092 RT 18.2m – 60'

- 20.1m Working height
- 540kg Lift capacity
- 4WD with hydraulic outriggers
- Dual extension deck – 7.5m deck length
- Onboard generator
- 40% Gradeability





### **ATHENA 850** **5.9m – 19'**

- Track drive
- Self-levelling up to 20 degrees
- Non-marking tracks
- Bi-Energy diesel/Lithium Battery power source
- Working Height 7.9m
- Weight 1,990kg

### **ATHENA 1090** **8.0m – 26'**

- Track drive
- Self-levelling up to 20 degrees
- Non-marking tracks
- Bi-Energy diesel/Lithium Battery power source
- Working Height 10m
- Weight 2,990kg



### **JLG E300AJP** **9.14m – 30'** **(NARROW)**

- Jib plus with 180° side to side range
- Ultra compact width 1.22m
- Horizontal outreach 6.10m
- Up and over height 3.99m
- Weight 6,895kg
- Platform capacity 230kg

### **GENIE Z34/22N** **10.5m – 34'**

- Non marking tyres
- Horizontal outreach 6.8m
- Up and over height 4.6m
- High angle steering provides excellent manoeuvrability
- Rolls through double standard doorways
- Weight 5,216kg
- Platform capacity 227kg



### **JLG M450AJ** **13.72m – 45'**

- Automatic traction control for on or off slabs
- Onboard genset
- Horizontal outreach 7.24m
- Weight 6,680kg
- Platform capacity 230kg

### **NIFTY HR17** **(NARROW)**

- Machine runs on battery
- Tough cage basket design
- SIOPS safety system standard
- Working height 15m
- Horizontal outreach 9.7m
- Platform capacity 225kg
- Weight 7,650kg
- Machine width 1.5m







### NIFTY HR12

- 10.2m Platform height
- Horizontal outreach 6.1m
- 4WD Bi Energy
- Non marking tyres
- Great for indoor and outdoor applications
- Lightweight 3500kg
- SWL 200kg



### JLG E400AJP 12.19m – 40' (NARROW)

- Solid non marking tyres
- Width 1.5m, horizontal reach 6.83m, up and over height 6.55m
- Jib plus with 180° side to side range
- Onboard genset
- Weight 7,760kg
- Platform capacity 230kg



### JLG M600JP 18.40m – 60'

- All wheel drive and jib plus
- Quick charge genset and inverter, provide automatic charging of batteries and power for operating tools
- Jib plus with 180° side to side range
- Horizontal outreach 13.06m
- Weight 7,530kg
- Platform capacity 230kg



### JLG 340AJ 10.35m – 34'

- 4WD rough terrain
- Horizontal outreach 6m
- Zero tail swing for tight applications
- Weight 4,400kg
- Platform capacity 230kg
- 45% gradeability

### GENIE Z34/22IC 10.6m – 34'

- 4WD Rough terrain
- 6.8m Horizontal outreach
- Up and over 4.6m high
- Zero tail swing for tight applications
- Weight 4,854kg
- Platform capacity 227kg



### JLG 450AJ 13.8m – 45'

- 4WD rough terrain
- On board generator for power to platform
- Up and over 7.34m
- Horizontal outreach 7.47m
- Weight 7,430kg
- Platform capacity 230kg

### JLG 510AJ 15.7m – 51'

- 4WD rough terrain
- On board generator for power to the boom basket
- Horizontal outreach 9.48m
- Weight 7,650kg
- Platform capacity 230kg





## HAULOTTE HA16RTJ PRO

- 4WD and 4WS
- Front oscillating axle increases stability on uneven ground
- Platform height 14m
- Horizontal outreach 8.3m
- Load capacity 230kg
- Weight 6,650kg



## JLG 800AJ 24.38m – 80'

- 4WD Superior and on board generator
- Horizontal outreach 15.8m
- Up and over 9.78m
- Quik stik provides optimum lowering & elevation
- Some models with crab steer
- Weight 15,220kg
- Maximum lifting capacity 227kg

## JLG 600AJ 18.46m – 60'

- 4WD Rough terrain
- On board generator
- Up and over 8.1m
- Horizontal outreach 12.12m
- Some models with crab steer
- Weight 11,900kg
- Platform capacity 230kg



## GENIE S45 13.7m – 45'

- 4WD
- Horizontal reach max 11.2m
- On board generator for power to basket
- Fitted with mine specification
- Gradeability 40%
- Weight 7,151kg



## JLG 660SJ 20.12m – 66'

- 4WD and articulating jib
- 5.5kva generator
- Airline to platform
- Weight 13,500kg
- 45% Gradeability
- Platform capacity 230kg



## JLG 460SJ 14.02m – 46'

- 4WD Superior rough terrain performance
- 360° Continuous turntable operation
- Weight 7,930kg
- Platform capacity 230kg
- On board generator



## JLG 860SJ 26.21m – 86'

- 4WD and articulating jib
- 5.5 generator
- Air line to platform
- Suitable for SkyGlazier attachment
- 45% Gradeability
- Weight 17,130kg



## HAULOTTE HT23 RTJ 20.6m – 67'

- 4WD and 4WS
- 22.5m Platform height
- Dual capacity basket 230kg or 450kg
- Raises to full height in 56 seconds
- On board generator with power to platform
- 40% Gradeability



## GENIE S85 25.9m – 85'

- Fitted with mine specification
- Full time 4WD in both high speed and low
- On board genset
- Weight 17,563kg
- Platform capacity 227kg



### HAULOTTE HA 32 PX 31.8m – 100'

- 21.3m outreach
- 250kg platform capacity
- 4WD
- Weight 20,700kg
- Continuous rotation



### JLG 1350SJP 41.15m – 135'

- 4WD and 4WS
- 7kva generator
- Airline to platform
- Suitable for SkyGlazier attachment
- 45% Gradeability
- Weight 20,299kg
- 230kg/450kg basket cap



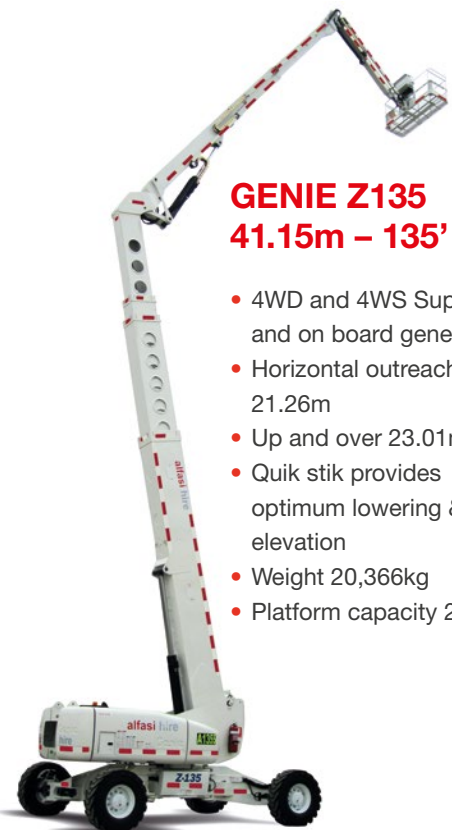
### JLG 1500SJP 45.72m – 150'

- 4WD and SWD
- Telescopic jib (up to 7.62m)
- 5.5 kVa generator
- Clear Sky GPS
- 40% Gradeability
- Weight 21,772kg



### GENIE Z135 41.15m – 135'

- 4WD and 4WS Superior and on board generator
- Horizontal outreach 21.26m
- Up and over 23.01m
- Quik stik provides optimum lowering & elevation
- Weight 20,366kg
- Platform capacity 272kg



### JLG 1850SJ ULTRA BOOM 56.56m – 185'

- Largest self propelled boom lift available
- Platform height 56.56
- Horizontal outreach 24.38
- Telescopic jib up to 6.1m
- 14.6m stowed length
- On-board generator
- 40% Gradeability
- Up to 454kg platform capacity
- 4WD
- LED platform control display for easier operation



### JLG 340AJ HYBRID BOOM 10.28m – 34'

- 4WD rough terrain (diesel like performance)
- Runs as an electric boom (diesel charges the batteries)
- 355 Degrees Non-Continuous Swing
- Working Height 12.28m
- Basket Capacity 230kg
- Weight 4,675kg



### NIFTY HR17

- Hybrid machine runs on both battery and diesel
- Suitable for both indoor and outdoor use
- Non-marking tyres
- Tough cage basket design
- SIOPS safety system standard
- Working height 17m
- Horizontal outreach 9.3m
- Platform capacity 225kg
- Lightweight 5,000kg



### NIFTY HR21

- AWD
- Tough cage basket design
- SIOPS safety system standard
- Platform height 18.8m
- Horizontal outreach 12.8m
- Load capacity 225kg
- Lightweight 6,500kg



### NIFTY SD210

- 4x4x4
- 19.30 Platform height
- Horizontal outreach 12.60m
- Four wheel drive / four wheel steer
- Lightweight 3950kg
- 45% Gradeability
- Independent suspension & turf tyres for minimul disruption to sensitive areas
- SWL 225kg



### OMME 3700 RBDJ

- Maximum platform height 35.00m
- Maximum working outreach 14.00m
- Stowed height 2.00m
- Stowed length (without basket) 7.28m
- Stowed width with basket off 1.10m
- Weight 5,500kg
- Up to 250kg platform capacity
- Non marking rubber tracks
- Electric and diesel operation for indoor and outdoor applications
- Remote control operation
- Low overall weight
- Elevates to full height in under 3 minutes
- Drives through a normal double door
- Fully functioning fly jib
- Highest lightweight machine currently available in Australia



### OMME 3150 RBDJ

- Maximum platform height 31.10m
- Maximum working outreach 12.60m
- Stowed height 2.15m
- Stowed length (without basket) 7.40m
- Stowed width with basket off 1.10m
- Weight 4,400kg
- 200kg platform capacity
- Non marking rubber tracks
- Electric and diesel operation for indoor and outdoor applications
- Remote control operation
- Low overall weight
- Drives through a normal double door
- Fully functioning fly jib



### OMME 3000 RBDJ

- Max working height 31.00m
- Max working outreach 12.60m
- Stowed height 2.15m
- Stowed length 8.17m
- Stowed width 1.10m
- Operating width 4.25 / 3.45m
- Platform width 1.20m
- Gradeability 40%
- SWL 200kg
- Weight 4,400kg
- 31.8m Platform height
- Non marking expandable tracks
- Bi-energy
- Suitable for indoor applications such as foyers and tilted floors
- Travels through most doorways
- Deployment capability (with outriggers) up to 40%
- Radio control drive for ease of operation







OMME 2750 RXBDJ

- Maximum platform height 25.50m
- Maximum working outreach 15.50m
- Stowed height 2.27m
- Stowed length (without basket) 7.00m
- Stowed width with basket off 1.10m
- Weight 5,100kg
- Huge outreach of 15.5m at 11.0m high (best in class)
- Zero tail swing when elevated
- True knuckle boom operation with great 'up and over' capacity
- Up to 250kg platform capacity
- Non marking rubber tracks
- Electric and diesel operation for indoor and outdoor applications
- Variable position outriggers
- Remote control operation
- Low overall weight
- Drives through a normal double door
- Fully functioning fly jib

PLATFORM BASKET PB2210

- Max working height 21.70m
- Max working outreach 10.30m
- Stowed height 2.07m
- Stowed length 5.28m (without basket)
- Stowed width 0.98m (without basket)
- Outrigger deployed dimensions 4.19m x 4.14m
- Platform size 1.7m x 0.7m
- SWL 200kg (max)
- Weight 3,350kg

Standard Features:

- Light weight
- Removable basket
- Fly jib
- Remote control operation
- 240v operation for indoor use
- Great up and over reach



PLATFORM BASKET PB1890

- Max working height 17.70m
- Max working outreach 9.30m
- Stowed height 1.95m
- Stowed length 4.25m (without basket)
- Stowed width 0.85m (without basket)
- Outrigger deployed dimensions 3.90m x 3.33m
- Platform size 1.2m x 0.66m
- SWL 200kg (max)
- Weight 2,457kg

Standard Features:

- Light weight
- Removable basket
- Fly jib
- Remote control operation
- 240v operation for indoor use
- Fits through a standard door



PLATFORM BASKET PB1380

- Max working height 12.99m
- Max working outreach 7.70m
- Stowed height 1.99m
- Stowed length 3.69m (without basket)
- Stowed width 0.78m
- Outrigger deployed dimensions 2.91m x 2.95m
- Platform size 1.2m x 0.66m
- SWL 200kg (max)
- Weight 1,620kg

Standard Features:

- Extremely light weight
- Removable basket
- Fly jib
- Designed to fit in goods lifts





### GENIE GR20 5.97m

- 7.8m working height
- Self drive
- Width 0.81m
- Fits through standard doorways
- Single man vertical lifter to 20'
- Weight 975kg



### HAULOTTE QUICKUP 12 10.3m

- 12.3m work height
- Indoor operation
- 2.06 x 2.26 outrigger footprint
- Weight 457kg



### AM15 4.5m & AM30 9.14m

- Push around vertical lifter with outriggers (AM30)
- 11.0m working height (AM30)
- Able to be transported on drop tray ute
- 1.89 x 1.81 outrigger footprint (AM30)

### JLG LIFT POD FS80 2.3m

- Portable, comes apart for easy transportation & manoeuvrability
- Lightweight 63kg



### HAULOTTE STAR 8 – 6.2m

- Working height 8m
- Long life batteries
- 3m platform outreach
- Non marking tyres
- High angle steering
- Total weight of 2600kg
- Outdoor rated



### HAULOTTE STAR 10 – 8m

- Working Height 10m
- Drive at full height
- Narrow 0.99m base for tight applications
- Non marking tyres
- Extendible jib with 3m outreach

### JLG TOUCAN 10E-L 8.10M – 26'

- 2.5 degree allowable tilt angle
- Working Height 10m/33'
- Working Outreach 3.38m
- Over and Up Height 6.51m
- Inside 200Kg Platform Capacity (2 people)
- Outside 120Kg Platform Capacity (1 person)
- Weight 2,600Kg



### 4 HEAD LIGHT TOWER

- 4 x high intensity LED light heads that are individually adjustable for both pan and tilt
- Very low fuel use of 1.2 litres per hour
- 250 hours of run time before refuel is required
- Programmable automatic start / stop times
- Mast rotates 360 degrees
- Retractable draw bar for compact storage and transport



### 6 HEAD LIGHT TOWER

- 6 x high intensity LED light heads that are individually adjustable for both pan and tilt
- Very low fuel use of 1.2 litres per hour
- 250 hours of run time before refuel is required
- Programmable automatic start / stop times
- Mast rotates 360 degrees
- Retractable draw bar for compact storage and transport





## JCB 525-60 2.5t – 6m REACH

- Lift capacity 2500kg with boom retracted; 1750kg at full height
- 6m lift height; 800kg capacity at 3.5m forward reach
- 4WD with two speed hydrostatic transmission
- Meets Tier 4 Final/Stage IIIB legislation requirements

## MERLO P 25.6 2.5t – 5.9m REACH

- Lifting height 5.9m
- Maximum lifting capacity 2.5t
- 0.27m Ground clearance
- Available attachments include standard forks, jib & rotator



## SKID STEER TRACK LOADER 205t

- Overall height - 2.0M
- Compact track loader
- Versatile and heavy duty
- Enclosed air-conditioned cabin
- Reverse Camera
- Multiple attachment options



## HAULOTTE HTL 3510 3.5t – 10m REACH

- 3.7m Turning radius
- Reversing camera with night vision
- 42cm Ground clearance



## MERLO P 36.10 3.6t – 9.7m REACH

- Lifting height 9.7m
- Maximum lifting capacity 3.6t
- 0.56m Ground clearance
- Available attachments include standard forks, jib & rotator



## MERLO P 40.17 4t – 17m REACH

- Lifting height 16.7m
- Maximum lifting capacity 4t
- 0.48m Ground clearance
- Available attachments include standard forks, jib, tynes & rotator



## HAULOTTE HTL 4017 4t – 17m REACH

- Reversing camera with night vision
- Lifting height 16.7m
- Maximum lifting capacity 4t
- 0.50m Ground clearance
- Available attachments include standard forks, jib & bucket

## MANITOU MT 1740 SLT 4t – 17m REACH

- Maximum lifting height 16.65m
- Nominal capacity 4,000kg at 500mm
- Maximum forward reach 12.35m
- 4WD / 4WS
- Hydraulic stabilizers
- Frame levelling

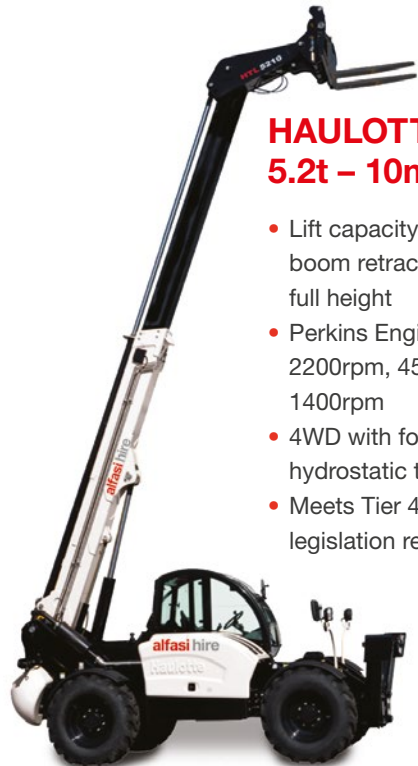


## JCB 540-180 4t – 18m REACH

- Lift capacity 4,000kg with boom retracted; 2,000kg at full height
- Engine 55kW (75hp) @ 2200rpm, 400Nm torque at 1300rpm
- 4WD with four speed hydrostatic transmission
- Meets Tier 4 Final/Stage IIIB legislation requirements







### HAULOTTE HTL5210 5.2t – 10m REACH

- Lift capacity 5,200kg with boom retracted; 3,500kg at full height
- Perkins Engine 83kW @ 2200rpm, 450Nm torque at 1400rpm
- 4WD with four speed hydrostatic transmission
- Meets Tier 4 Final/Stage IIIB legislation requirements

### JCB 560-80 AGRI 6t – 8m REACH

- Lift capacity 6,000kg with boom retracted; 3,000kg at full height
- Engine 55kW (75hp) @ 2200rpm, 550Nm torque at 2200rpm
- 4WD with four speed hydrostatic transmission
- Meets Tier 4 Final/Stage IIIB legislation requirements



### MERLO P 60.10 6t – 10m REACH

- Lifting height 9.55m
- Maximum lifting capacity 6t
- 0.48m Ground clearance
- Available attachments include standard forks, jib & rotator



### MANITOU MHT-X790 9t – 7m REACH

- Maximum lifting height 6.84m
- Lift capacity 9,000kg with boom retracted; 6,000kg at full height
- 4WD, and 4 Wheel Steer, 3 Steering modes
- Automatic negative parking brake
- JSM® Joystick multi-function - Load limiter cut off system - EN 15000 Norm

### MANITOU MHT-X10130 13t – 10m REACH

- Maximum lifting height 9.62m
- Lift capacity 13,000kg with boom retracted; 6,000kg at full height
- 4WD, and 4 Wheel Steer, 3 Steering modes
- Automatic negative parking brake
- JSM® Joystick multi-function - Load limiter cut off system - EN 15000 Norm



### TOYOTA 42-7FGR25 2.5t – 4.3m MAST

- 3 Stage mast
- Integral sideshift
- Gas and petrol
- Container mast

### TOYOTA 42-7FG25 2.5t – 6m MAST

- 3 Stage mast
- Integral sideshift
- Gas and petrol



### ENFORCER XF SERIES 2.5t – 4.3m MAST

- 3 Stage mast
- Integral sideshift
- Gas and petrol
- Container mast



### TOYOTA 32-8FG30 3.0t – 4.3m MAST

- Digital weight scale
- Integral sideshift
- Gas and petrol
- Non marking tyres





### ENFORCER XF SERIES 3.5t – 4.1m MAST

- 3 stage mast
- Diesel
- Container mast
- Side shift



### ENFORCER 4t – 3m MAST

- LPG powered
- Mast height 2.265m
- Track speed 22km ph
- 3 stage mast



### ENFORCER 5t – 3m MAST

- LPG powered
- Mast height 2.265m
- Track speed 22km ph
- 3 stage mast



### AUSA 16t FORKLIFT DC0160-6

- Lifting height; 5.0m
- Mast height; 4195mm
- Side shift function



### MANITOU MH 25-4T 2.5t – 3.3m 4WD 'BUGGIE'

- Sideshift
- Road registered
- 2.0m overall height



### ENFORCER 5t BUGGY FD50T-AT

- Diesel engine
- High ground clearance
- 2WD
- Lifting height; 3.0m
- Mast height 2565mm



### MANITOU M30-2 3.0t – 3.7m MAST

- 3 Stage mast
- 2WD Rough terrain forklift
- Sideshift
- Diesel 70kw turbo engine
- Lights and indicators







### GENIETZ50 TOWABLE 15.09 BOOM LIFT

- 17.09m working height
- Self drive
- 8.89m horizontal reach
- Non marking footpads
- Self levelling

### TANDEM MACHINERY TRAILER

- Suitable for all brands of 12', 19' Electric Scissor and GR20
- Multiple applications



### GENIE TZ34 TOWABLE BOOM LIFT

- 12.3m working height
- 5.59m horizontal reach
- 90° basket rotation
- Self levelling

### NIFTY 150T TOWABLE BOOM

- Traction drive via joystick control
- Compact machine
- Platform height 12.7m
- Horizontal outreach 7.55m
- Width of machine with outriggers down 3.8m
- Load capacity 225kg
- Lightweight 1725kg



### NIFTY 120T TOWABLE BOOM

- Traction drive
- Compact machine
- Platform height 10.2m
- Horizontal outreach 6.1m
- Width of machine with outriggers down 3.55m
- Load capacity 200kg
- Weight 1,195kg



### 5KVA & 8KVA GENERATORS

- Suitable to run small tools
- Portable
- Requires 2 men to lift



### 20KVA, 80KVA & 137KVA GENERATORS



### ATLAS COPCO 190cfm COMPRESSOR

- World leading compressor
- Hard hat cover
- Built in spill tray (110% containment)
- Proven Deutz engine
- Control panel isolation switch
- Air hoses available



### ATLAS COPCO 130cfm COMPRESSOR

- World leading compressor
- Sturdy metal canopy
- Proven Deutz engine
- Air hoses available



### GENIE SLC-18 DUCT LIFTER

- Heavy duty design
- Rolls through standard single doorways
- Working height 5.6m
- Load capacity 363kg



### DIESEL WELDERS

- Various models available
- Weld leads and earth available



### PLATFORM LADDERS

#### Sizes

- 1.2m
- 1.8m
- 2.1m
- 2.4m
- Light and portable on wheels
- Ideal solution when self propelled scissor is not required





## FORD RANGER SERVICE VEHICLES

- Mine site compliant
- 5 Star ANCAP rating



## TILT TRAYS & PRIME MOVERS

- 420hp, 610hp & 700hp Volvo Prime Movers with sleeper cabins, suitable for country & interstate work





## Melbourne (Headquarters)

110 Frankston Gardens Drive  
Carrum Downs  
Victoria 3201 Australia  
Telephone: 1300 55 11 08  
or +61 3 8795 2999  
Email: melb@alfasi.com.au

---

## Melbourne (West)

25 Marwen Drive,  
Derrimut  
Victoria 3026 Australia  
Telephone: 1300 55 11 08  
Email: melb@alfasi.com.au

---

## Sydney

21-23 Wurrook Circuit,  
Caringbah  
New South Wales 2229 Australia  
Telephone: 1300 55 11 08  
or +61 2 9589 6200  
Email: syd@alfasi.com.au

## Brisbane

86 - 96 Depot Street  
Banyo  
Queensland 4014 Australia  
Telephone: 1300 55 11 08  
or +61 7 3370 2800  
Email: qld@alfasi.com.au

ISO 9001  
AS/NZS 4801

BUREAU VERITAS  
Certification



N° AU001106-1 / N° AU001107-1